

# CMHA Phase 3 Safety Plan

September 8, 2020

With the season rapidly approaching and phase 3 just being announced by Via Sport and follow up by BC Hockey, we continue to have ongoing conversations aimed at creative ways “Return To Play” in the coming weeks.

CMHA would ask that the City of Cranbrook consider the following proposal along with supporting documents (BC Hockey Return to Play Plan and Emergency Response Plan (EAP)) to support our participants in resuming hockey in a safe and controlled environment while abiding by all Provincial Health Authority, ViaSport, BC Hockey and BCRPA regulations relating to Covid and Return to Play.

CMHA reserves the right for coaches and volunteers to remove any player from the facility that they deem to be a safety risk.

CMHA will always adhere to the Provincial Health Authority Mandate restricting gatherings to a maximum of 50 people. Within the current parameters of up to 50 people, we are aware that this applies to anyone within the building that is there for the same purpose.

CMHA will comply with these regulations as follows:

## Arrival:

- It is preferred that all players arrive at the arena fully dressed including skate guards. If this is not possible, skates, gloves and helmets may be put on within the designated pre-ice areas within the facility.
- Goaltenders may enter with only their under-gear on and are permitted to dress/undress within the designated pre-ice areas within the facility.
- Bags will be permitted within the area but will be used to only for the items and purposes listed above.
- Participants will need to be ready to enter the arena 15 minutes prior to their scheduled ice time.
- To minimize physical contact, coaches and volunteers will not tie skates for participants within the facility.
- Participants may tie their own skates within the facility; however if they require assistance, they will be asked to do so prior to entering the arena.
- Players are each permitted to bring in one water bottle that must be filled at home. Player’s name must have their name clearly displayed.
- Players will line up following social distance markers and 2 meters spacing in front of the arena.
- CMHA will provide a safety check-in person stationed at front of the Memorial to perform the following:
  - Each player will have to review the Covid checklist and provide confirmation that they meet the required criteria.
  - Each player will have their temperature checked and will be allowed in only if they are within the acceptable range.

- CMHA will use a paper checklist (during tryouts) or TeamSnap Health Check (after tryouts) for appropriate record keeping and contact tracing purposes.
- Parents will not be permitted to enter the arena to maintain the 50-person maximum.
- Once check-in is complete, players will enter the appropriate pre-ice seating area
  - Trophy case and washroom area, or
  - Northwest corner of arena near the referee room.
  - No more than 19 participants, 2 coaches and up to 2 volunteers will be allowed in each of these pre-ice areas at one time.
  - Social distancing must be maintained.

Departure:

- All players will leave dressed the same as they arrived.
- Participants will need to leave the facility after their ice time within 15 minutes.

Entry to Ice (field of play):

- CMHA will provide someone to direct participants to the appropriate areas once inside the facility.
- Players will line up on social distance markings and will enter the ice surface when notified.
- A maximum of 20 players and 4 coaches will be permitted on the ice at one time.
- For scrimmage play, players go one at a time and will sit in the marked social distance benches and chairs.
- Benches marked with social distance spacing can support a maximum of 5 players at a time. Chairs placed beyond the benches 2 metres apart will be used when bench numbers are greater than 5.
- Each team will be given 5 minutes to warm up while the other team remains on the bench.
- Entry to the ice from the benches will be only through the two gates closest to center ice.
- Players changing off the ice will only go through either the corner gates (more than 5 off ice at a time) or the blueline gates (5 or less off ice at a time).

Skills or Practice Sessions:

- See **Appendix A**
- 20 players plus 4 coaches will be the maximum on the ice at one time.
- Grouping of players is recommended through skill stations, lanes, zones, etc. This will minimize contact and support social distancing.
- Corners with social distancing markers will be used as much as possible.

Scrimmages:

- See **Appendix B**
- 20 players plus 4 coaches will be the maximum on the ice at one time.
- Warm-ups and entry to the ice will be staggered where necessary to maintain the maximum numbers noted above.
- Bench entry and exit will be one directional through the appropriate gates as noted above.
- A maximum of 19 players per team will be permitted.

- Cohorts will be formed and recorded by CMHA and will be available to the City of Cranbrook upon request.
- 2 officials will be permitted but will maintain social distancing or wear a face covering.
- Up to 2 coaches will be permitted per side and coaches will either stand in the bleachers behind the bench or will wear a face covering while on the bench.

Coaches, volunteers, officials, and evaluators:

- Will undergo the same health screening as players.
- Will do their best to ensure that social distancing rules are followed when required.
- Will wear a face covering when social distancing can not be achieved. This applies to assisting players with equipment, attending to injured players, etc.
- Will put on skates and/or equipment in Lobby Entrance Area.

Suspected illness with any Covid related symptoms:

- All safety volunteers are encouraged to maintain social distancing. If for any reason they are required to be closer than 2 meters from a potentially ill participant, they will be required to wear a face mask, gloves and eye protection.
- Participant will be asked to go directly off the ice and up into the isolation area located above dressing room 4 in the northeast corner of the building.
- Parents will be contacted and be asked to pickup and take their child directly to the hospital for professional evaluation.
- If a positive Covid case is reported, CMHA will contact Interior Health and follow their guidance.
- All decisions relating to a positive Covid case will be made by Interior Health only.

Additional Facility Information:

- Sanitization stations with hand sanitizer will be located at each check-in station and within pre-ice areas.
- Lobby washroom usage will be permitted but will be restricted to only 2 people per washroom at a time.
- Referee room washroom will be open but only 1 person will be permitted at a time.
- Dressing rooms will be off limits at this time.
- Showers and dressing room washrooms will be off limits.

Additional Safety Rules:

- No spitting anywhere inside of the facility including on the ice surface.
- No sharing of water bottles.
- No horseplay of any kind.
- Any player that feels sick or unwell MUST stay home.

Discipline Policy:

- A failure to comply with any of these guidelines will result in the following disciplinary measures:
  - First Offence - Verbal Warning
  - Second Offence – Player will miss the next scheduled ice time and parents will be notified.
  - Third Offence – Player will be removed from participation indefinitely and the matter will be brought to the CMHA Discipline Committee for disciplinary action.

CMHA has made a board decision to not permit parents within the building for the time being as the focus of Phase 3 and the return to play is on the participants and to maintain our 50-person total capacity.

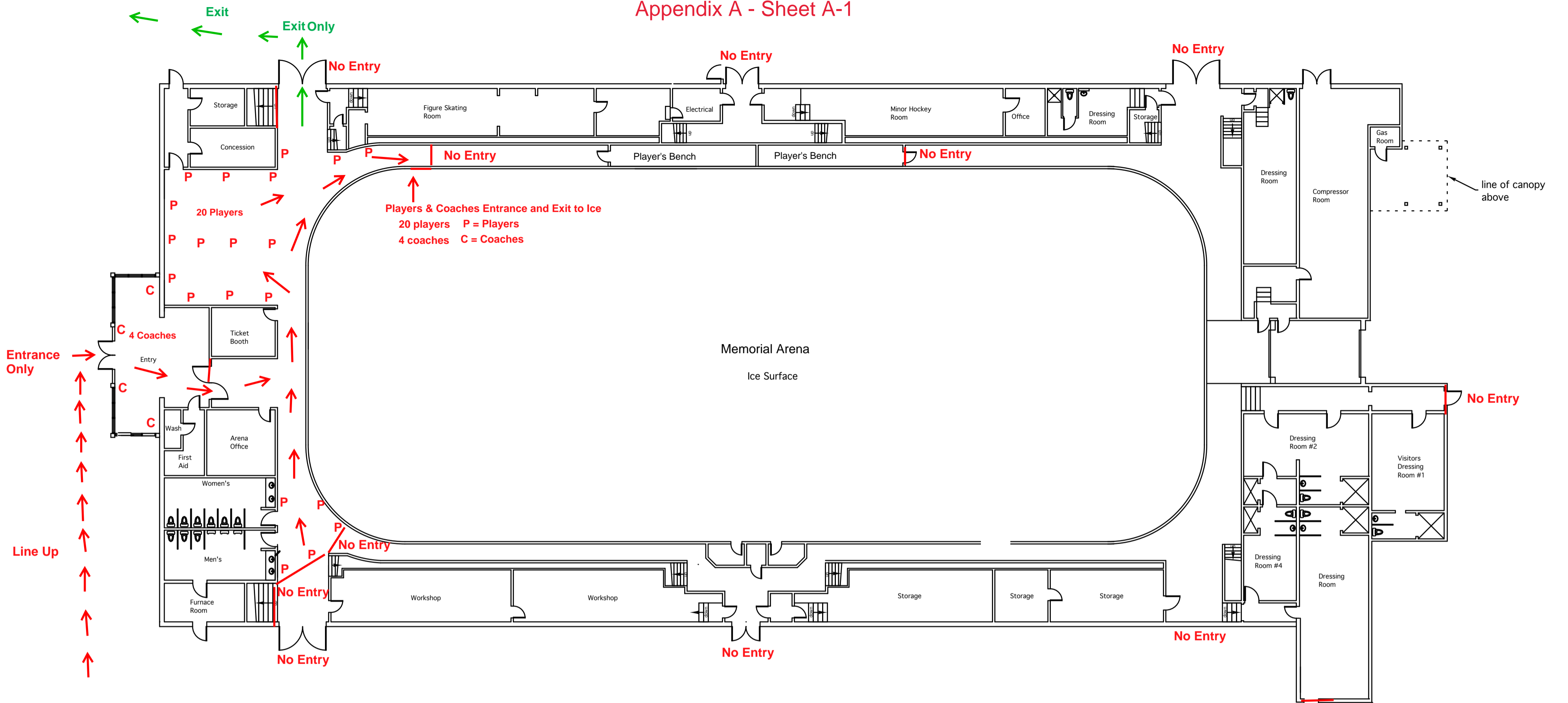
We would ask that you consider dressing room usage be permitted at a later date if/when your regulations change so long as all persons entering the rooms being required to wear masks while in the dressing room. Masks will only be allowed to be taken off once players exit the rooms and can appropriately social distance once again.

Our goal to maintain everyone's safety would not change whether players are sitting in a common area putting skates on, on the ice together, in a school classroom together, or in a dressing room together. Our focus of protecting everyone is still the main focus through cleanliness, sanitization and common sense.

We look forward to getting our season started as soon as possible and appreciate all the support the City provides us with!

Regards,

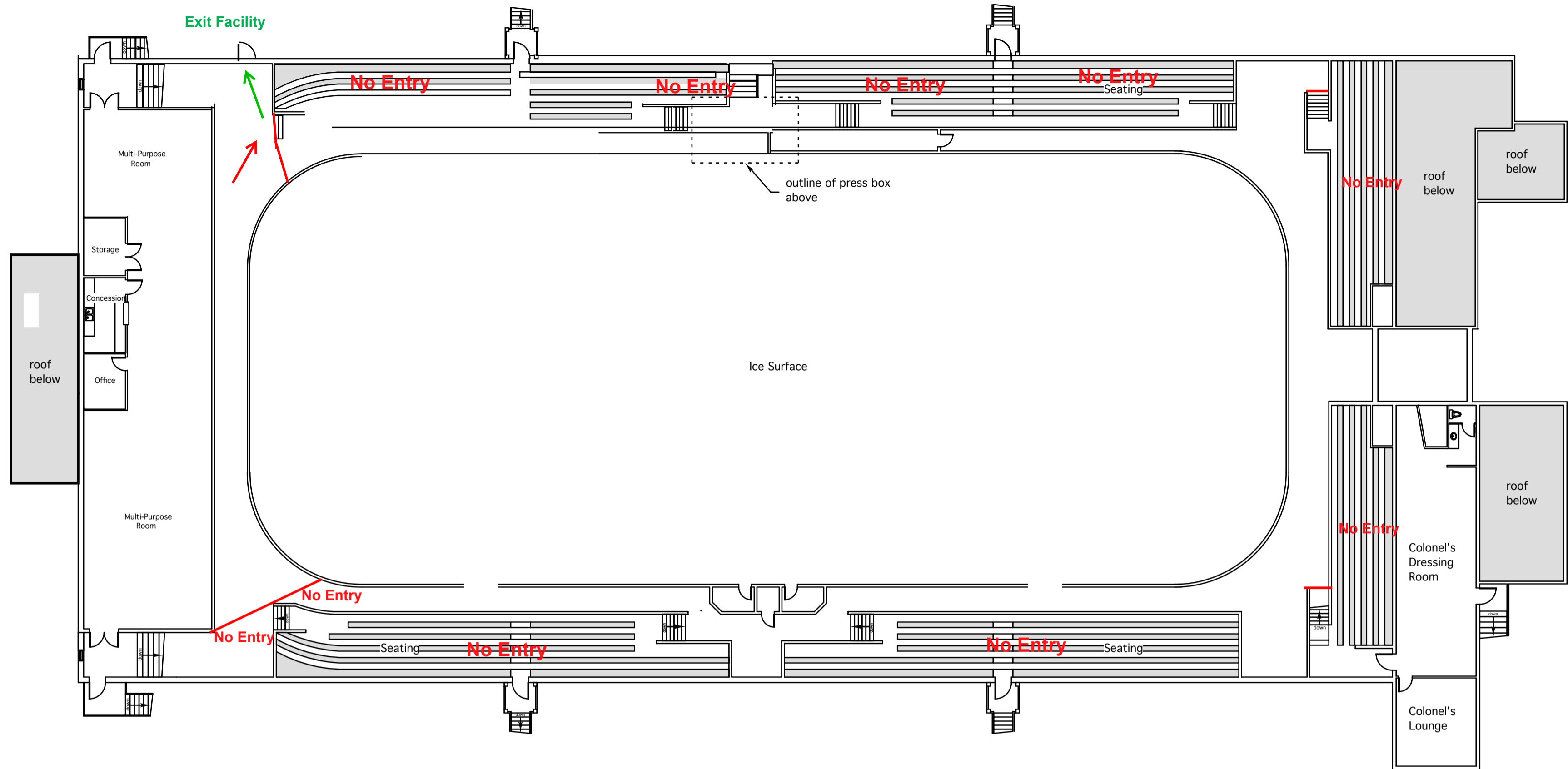
Justin Campbell  
CMHA President



MAIN FLOOR PLAN

SCALE 1/16" = 1'-0"

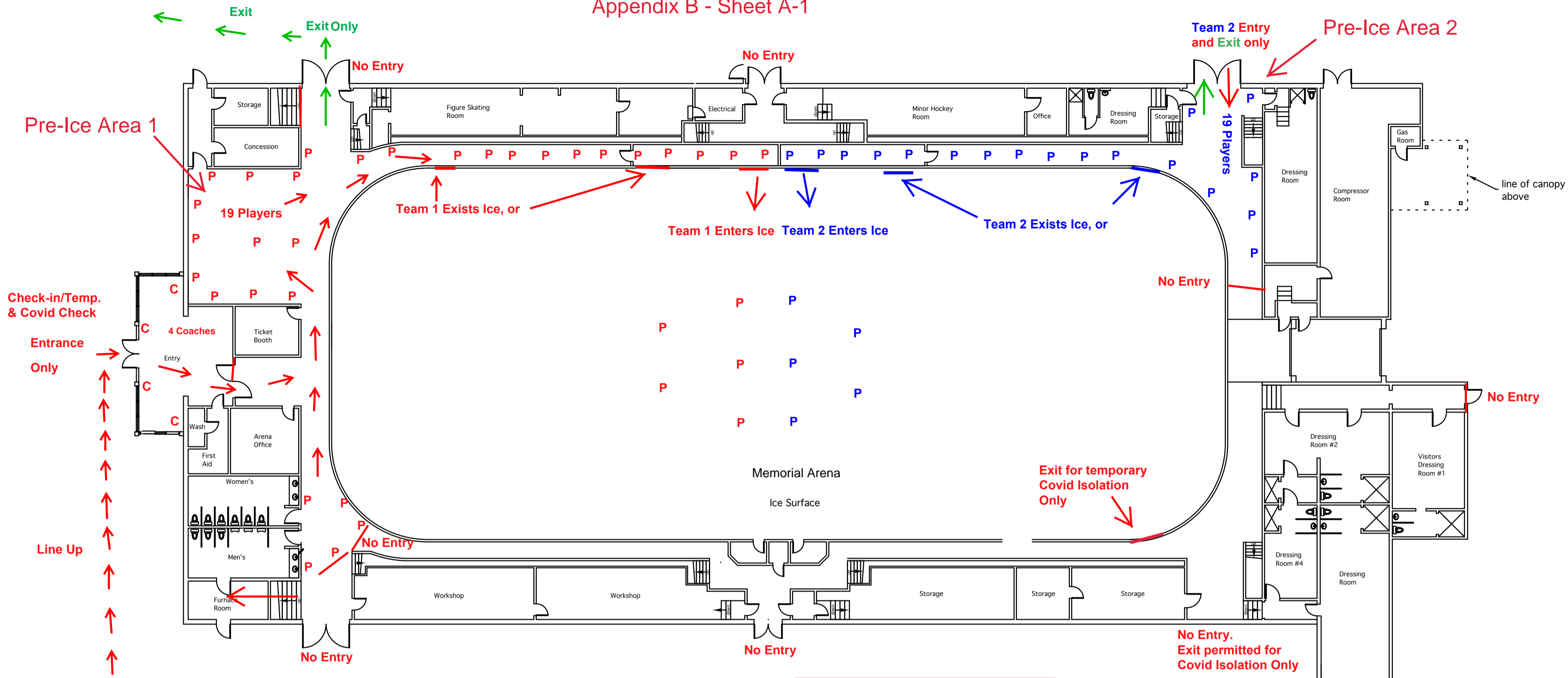
5										
4										
3										
2										
1										
NO	DATE	DESCRIPTION	11506 Highway 3a Sanca, BC VOB 1A2 Phone: 250-223-8080 Fax: 250-223-8080	#9642 Clearview Road Cranbrook, VIC 7E2 Phone: 250-427-4578 Fax: 250-427-4578	Christine Ross Architect MAIBC	Project CRANBROOK MEMORIAL ARENA	Sheet Title MAIN FLOOR PLAN			Sheet No. <b>A-1</b>
							Project No.	Date: July, 2011	Scale: 1/16" = 1'-0"	Drawn: CR & RB



**UPPER FLOOR PLAN**

SCALE 1/16" = 1'-0"

5										
4										
3										
2										
1										
NO	DATE	DESCRIPTION	11506 Highway 3a Saanich, BC V0B 1A2 Phone: 250-223-8080 Fax: 250-223-8080	#9642 Clearview Road Cranbrook, VIC 7E2 Phone: 250-427-4578 Fax: 250-427-4578	Christine Ross Architect MAIBC  	Project CRANBROOK MEMORIAL ARENA	Sheet Title UPPER FLOOR PLAN			Sheet No.  <b>A-2</b>
							Project No.	Date: July, 2011	Scale: 1/16" = 1'-0"	Drawn: CR & RB

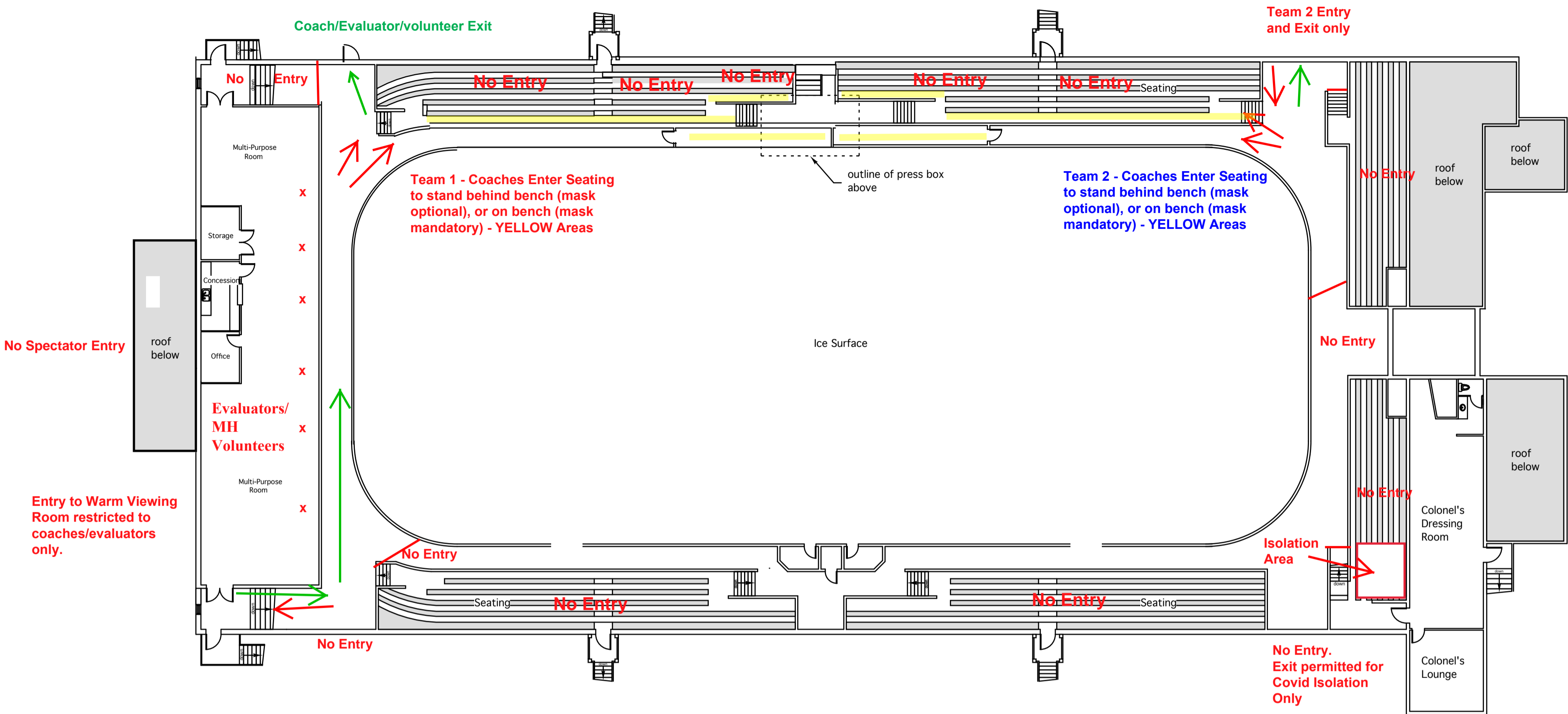


No More than the following on the playing surface at one time:  
 20 - players  
 4- coaches  
 P = Players C = Coaches

MAIN FLOOR PLAN

SCALE 1/16" = 1'-0"

5										
4										
3										
2										
1										
NO	DATE	DESCRIPTION								
			11506 Highway 3a Sanca, BC VOB 1A2 Phone: 250-223-8080 Fax: 250-223-8080	#9642 Clearview Road Cranbrook, VIC 7E2 Phone: 250-427-4578 Fax: 250-427-4578	Christine Ross Architect MAIBC	Project CRANBROOK MEMORIAL ARENA	Sheet Title MAIN FLOOR PLAN			Sheet No. <b>A-1</b>
							Project No.	Date: July, 2011	Scale: 1/16" = 1'-0"	Drawn: CR & RB



UPPER FLOOR PLAN

SCALE 1/16" = 1'-0"

5												
4												
3												
2												
1												
NO	DATE	DESCRIPTION	11506 Highway 3a Sanca, BC VOB 1A2 Phone: 250-223-8080 Fax: 250-223-8080	#9642 Clearview Road Cranbrook, VIC 7E2 Phone: 250-427-4578 Fax: 250-427-4578	Christine Ross Architect MAIBC	Project CRANBROOK MEMORIAL ARENA	Sheet Title UPPER FLOOR PLAN	Project No.	Date: July, 2011	Scale: 1/16" = 1'-0"	Drawn: CR & RB	Sheet No. <b>A-2</b>